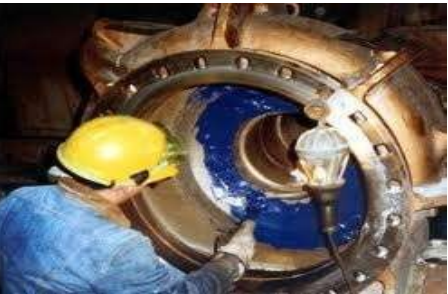


DE DEV ENTERPRISE



We are engaged in Manufacturing and supplying an outstanding range of Anticorrosive Epoxy Paints & Epoxy Primers. Our product assortment is manufactured by our company using the finest quality raw materials as per the international standard. Professionals of our team examine these products on different parameters to eradicate all the flaws from the assortment. These products are extensively used in various segments and are Available at an affordable price range.

ANTICORROSIVE EPOXY PAINT



**APPLIED ON SEA WATER PIPES AT
BIRLA POWER PLANT KOVAYA**



**APPLIED ON PETROLEUM STORAGE
TANKS SUPPLIED TO IRAQ PLANT**



**APPLIED ON PETROLEUM STORAGE
TANKS SUPPLIED TO RELIANCE PLANT**



**APPLIED ON FACTORY SHED STRUCTURES
IN BARODA**



ZINC PRIMECOAT



MIO PRIMEBOND

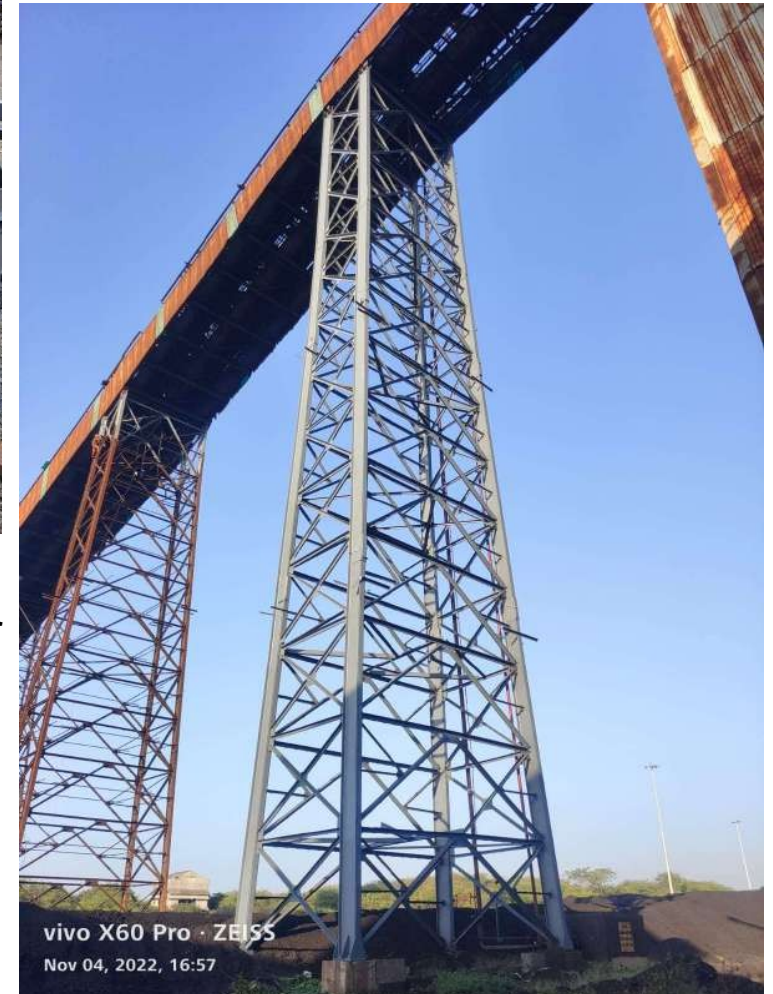


ZINC RICH PAINT

Zinc-rich Paint contain 94% metallic zinc in dry film, to provide outstanding performance in highly corrosive environment. Metallic Zinc paints also known as “ Cold Galvanizing”, imparts Cathodic protection to the base metal and Epoxies groups react with polyamide / Amine adduct hardener to form tough, non convertible film at ambient temp. It resists photo degradation by UV light as it contains UV absorber. This product complies with ASTM D520 type II zinc dust



Zinc-rich paints are also widely used as primers to high-performance two and three coat systems and for repair of batch hot-dip galvanized coatings. In mild environments, inorganic zinc paint may be used independently for corrosion protection, but should be top coated in more severe environments to extend service life.



METAL SURFACE COATING

It is a brushable epoxy coating specially blended with abrasion resistant, 92% ceramic fillers to provide a durable barrier to protect surfaces subjected to wear and abrasion. is easy and apply by brush to most surfaces. is waterproof and resistant to most chemicals and solvents. is a thick and creamy epoxy coating will allow for vertical and overhead application.

APPLICATIONS

Pipe Elbows / Pipe Inner Body / Mixing vessels / Cyclones / Hopper and Chutes / Pump Casings / Wear Plates / Brick Corners and Transitions Areas / Dust Collection Systems / Chipper and Grain Bins / Pneumatic Conveyors / Heat Exchangers and Tube Sheets / Augers, Fan and Impeller Blades



**INNER CERAMIC COATING ON T-BEND COATING ON VENTURY OF BOILERS
SEA WATER PIPE**



**CERAMIC COATING APPLIED ON
INNER SUFACE OF OPHERS OF
ASH PLANT**



WATER PIPE



CERAMIC COATING ON CEMENT MIXER



**CERAMIC COATING APPLIED ON
INNER SUFACE OF COOLING TOWER
SEA WATER PIPES**



COLDWELD SUPERBOND

Cold Weld Super Bond is an emergency repair product make fast, permanent repairs and provide the ability to respond to emergency situations quickly and positively, minimizing damage to equipment and possibly saving money in clean up costs and damage to the environment.



LEAKAGE SEALED ON JOINTED PIPES



LEAKAGE SEALED ON DIGESTER



HCFC PLANT REACTOR JACKET

CONCRETE PROTECTIVE COATING

Concrete Protective Coating is a durable, 2-part epoxy coating for the long-term protection of concrete from chemical attack from sources such as acid mist, organic acids and water containing corrosive chemicals. Concrete surfaces are often porous, subject to bacterial growth and difficult to clean.



METAL PROTECTOR

It is a protective compound which has a Ceramic and Fiber-Glass Base. is a Solvent-Free, high build, slightly flexible epoxy coating and has excellent chemical and abrasion resistance. This epoxy is designed with some internal flex which reduces brittleness and improves impact resistance. With Fiber cloth wrapping system is special coating system designed specifically for Pipeline coatings. Fiber Cloth is applied to surfaces to provide reinforcement and abrasion resistance and will act as a sleeve over the pipe and will get mechanically bonded to the metal giving the pipe more life. Fiber cloth will give sufficient strength to old corroded pipe and new fabricated pipe as well, to withstand high pressure without leakage.



APPLIED ON WATER PIPELINE TO BE LAYED UNDERGROUND AT TATA CHEMICALS MITHAPUR



APPLIED ON WATER PIPELINES AT ULTRATECH CEMENT KOVAYA

WRAPPING COATING ON FIRE PIPELINES



**WRAPPING COATING ON FIRE PIPELINES
AT ULTRATECH CEMENT KOVAYA**

**WRAPPING COATING ON FIRE PIPELINES
AT ESSAR OIL JAMNAGAR**

**WRAPPING COATING ON FIRE PIPELINES
AT TATA CHEMICALS MITHAPUR**

SUPPLY AND APPLICATION OF METAL PROTECTOR WITH FIBER WRAPPING SYSTEM ON COOLING TOWER PIPES & DM PLANTS TANKS AND PIPES AT SIKKA GEB





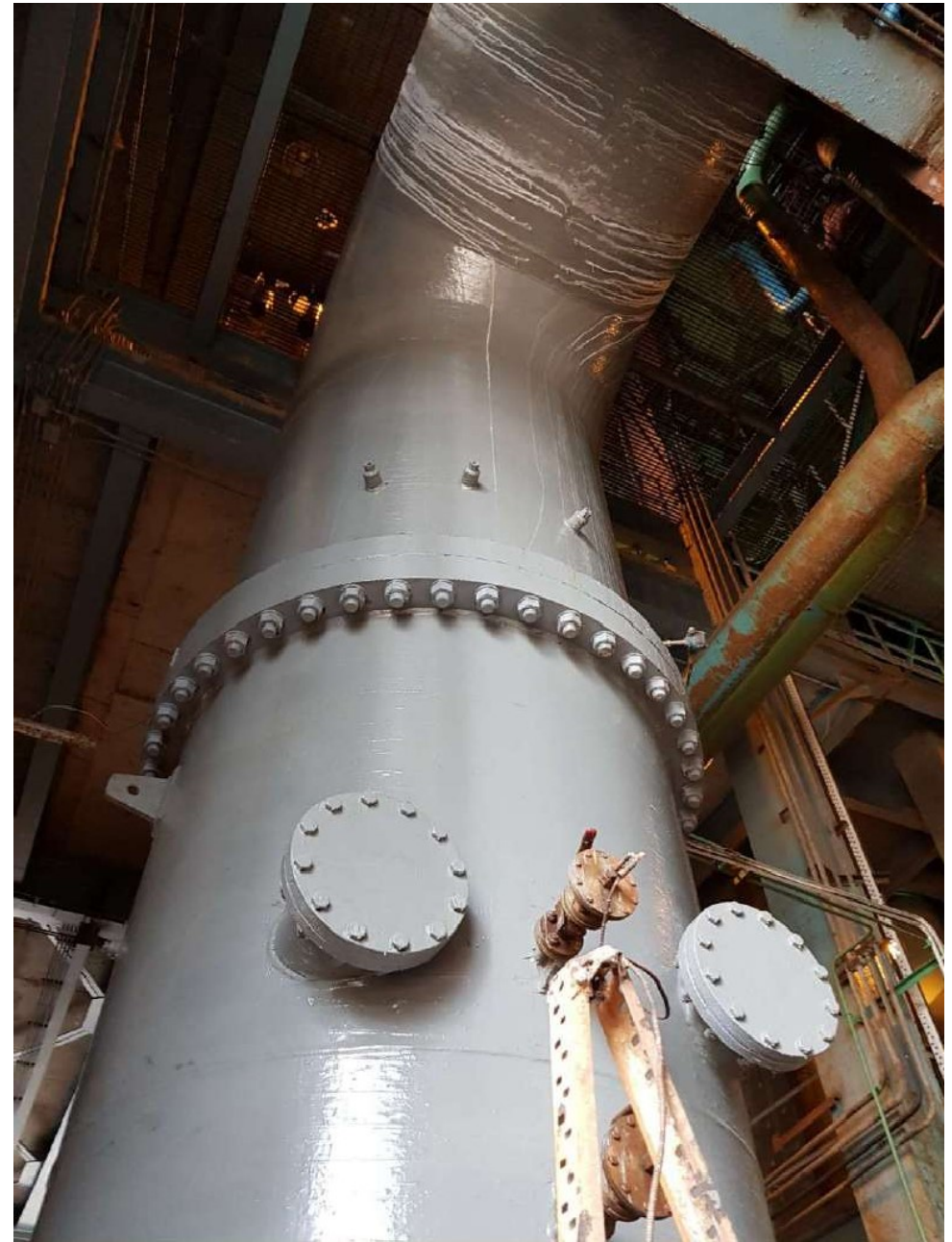
SUPPLY AND APPLICATION OF METAL PROTECTOR INTERNAL COATING ON BENDS OF COOLING TOWER PIPES AT SIKKA GEB



SUPPLY AND APPLICATION OF METAL PROTECTOR WITH FIBER WRAPPING SYSTEM ON DM PLANT PIPES & TANKS AT SIKKA GEB

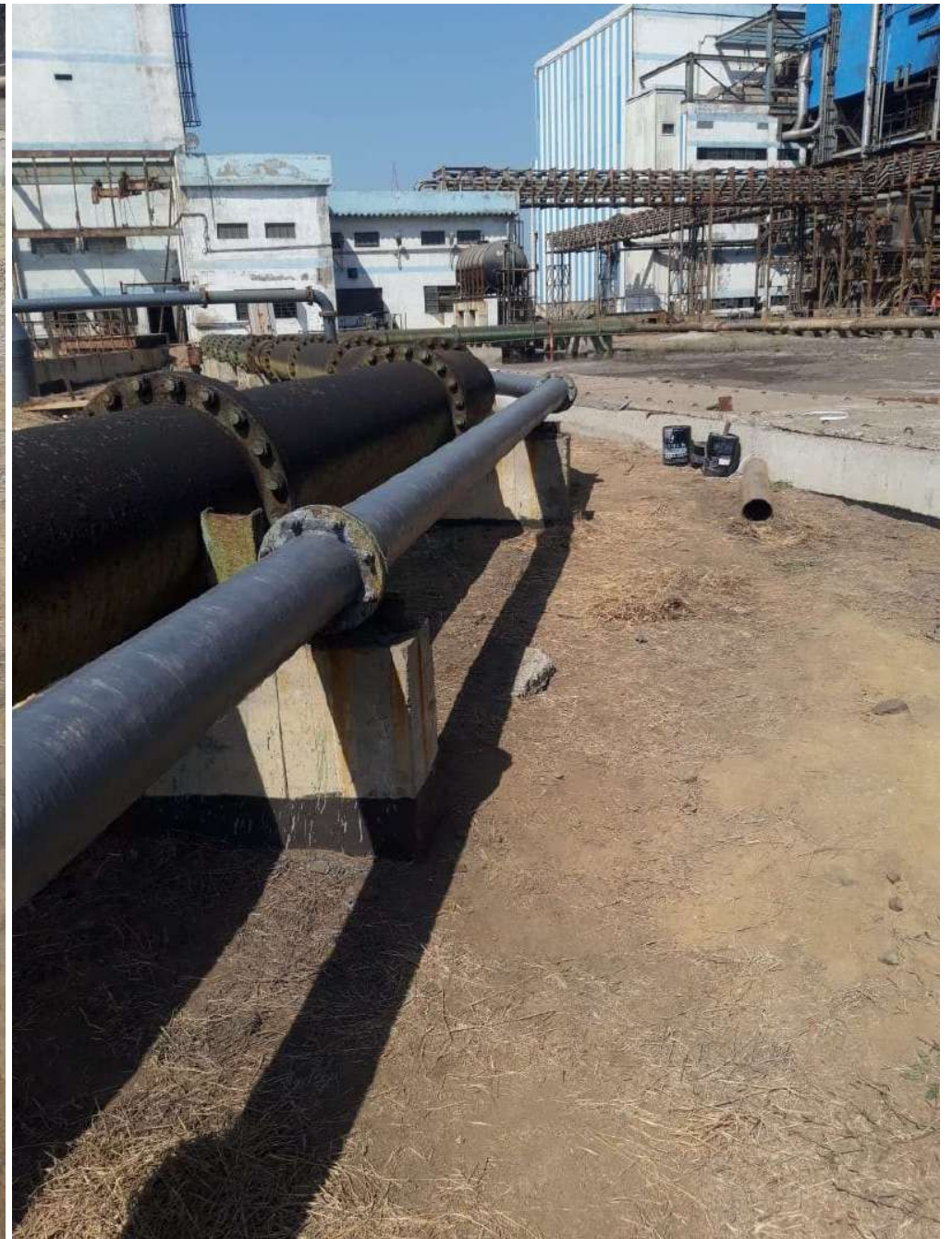


SUPPLY AND APPLICATION OF METAL PROTECTOR WITH FIBER WRAPPING SYSTEM ON CONDENSOR PIPES AND TANKS PIPES AT SIKKA GEB



**SUPPLY AND APPLICATION OF METAL PROTECTOR WITH FIBER WRAPPING SYSTEM ON
DM PLANT TANKS AT SIKKA GEB**

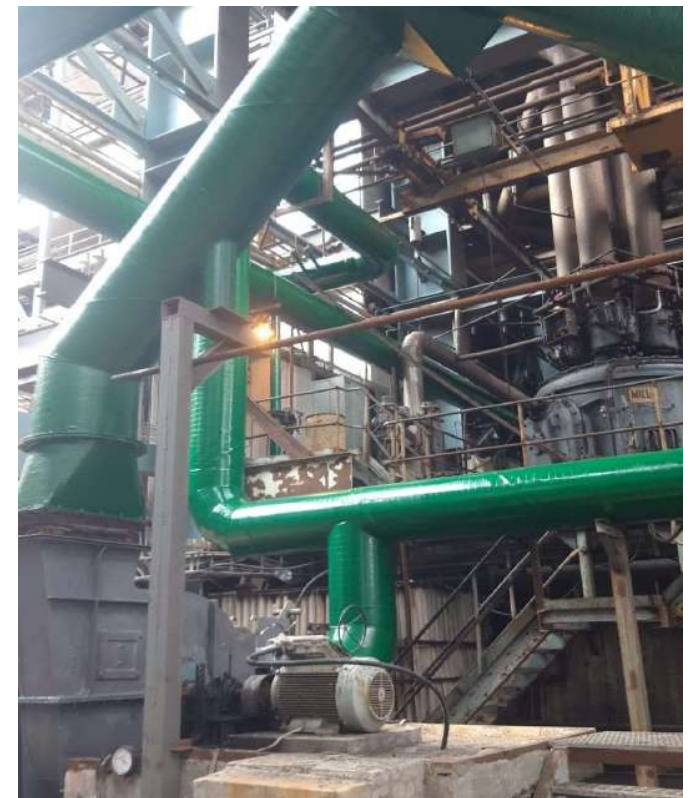








WRAPPING COATING ON SEA WATER HEADER OF COOLING TOWER



WRAPPING COATING ON PIPES AND TANKS OF DM PLANT



WRAPPING COATING ON PIPE HEADER OF COOLING TOWER



WRAPPING COATING ON STORAGE TANKS OF DM PLANT

WRAPPING COATING ON STORAGE TANKS OF DM PLANT





WRAPPING COATING ON HCL TANKS OF DM PLANT

